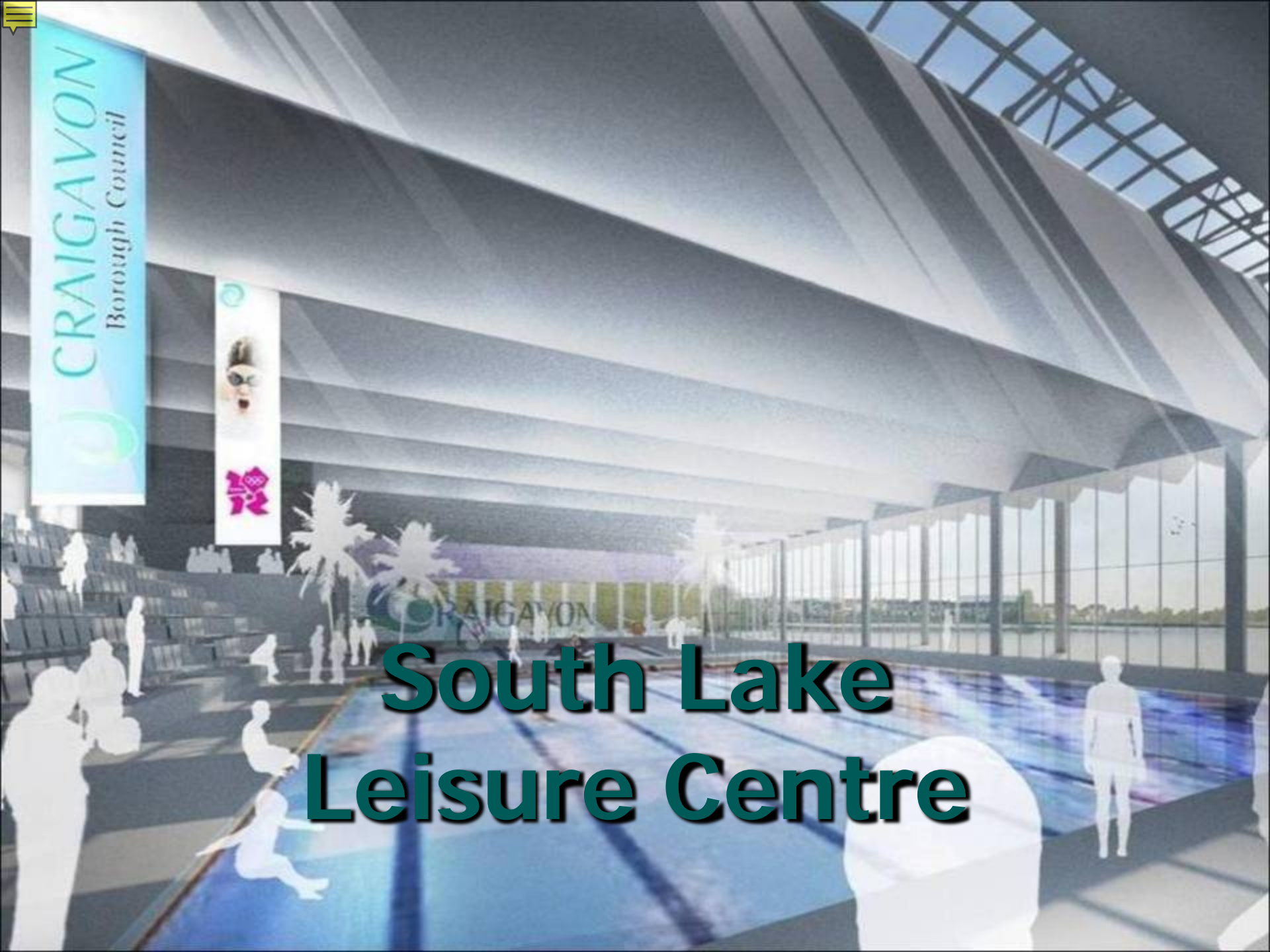


CRAIGAVON  
Borough Council



# South Lake Leisure Centre



# Why a new Leisure Centre

- Population of 92,000
- 3 old Centres 37-46 years
- Requirement to provide high class indoor leisure
- Civic, Educational and Health benefits
- Accessibility, cost effective and sustainable
- Political support / RPA





# The Financial Perspective

- Capital cost of £25m
- Existing sites becoming increasingly expensive to maintain
- Operational saving of £1m per year
  - Increased income
  - Reduced operational cost



# The Non-Financial Perspective

- Fits with ambitious Corporate Plan
- Opportunities to increase participation & promote accessibility
- Clear evidence of need
- Opportunities to link with health & education
- Stimulus to regeneration







Craigavon Lakes

Site

Craigavon Civic & Conference Centre







# Why invest in the South Lake?

- Improves the image of Craigavon as a good place to work/live/visit
- Tourism, environment, leisure and recreation focus- South Lake a key driver and catalyst for further regeneration
- Compliment private sector plans
- Ideally placed to serve a large catchment population
- Stem spend leaking out of local economy
- Evidence of significant public investment



- Training size 8-lane 50m pool
- Fun pool with a range of water features
- Large multi-purpose sports hall
- Large modern gym with health spa





- Outdoor synthetic 5 a side pitches
- Multi-use activity rooms
- Children's soft play area
- Café



# Next Steps

- Appoint a Design Team for the Project
- Finalise the Design Brief for the Centre
- Involve users at detailed design stage
- New facility to be open by end of 2015.
- Development opportunity for 3 town centre locations

